

CEE 7/XVI

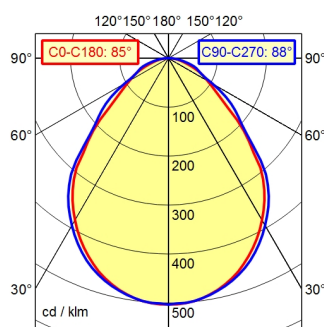


BS 1363 A



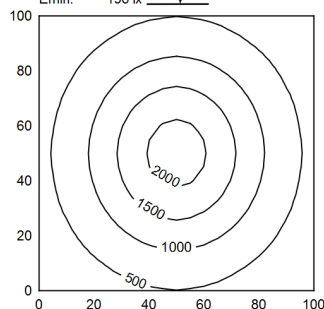
NEMA 1-15P

A50 ↓ 100.0% Φ: 1250 lm



100 x 100 cm Φ: 1250 lm

Em: 892 lx  
Emax: 2140 lx  
Emin: 196 lx  
= 50 cm



**light source**  
**work equipment**  
**connected load**  
**power consumption**  
**luminous flux**  
**luminous efficiency**  
**light type/-color**  
**colour temperatur**  
**color rendering index**  
**light distribution**  
**direct ratio**  
**beam angle**  
**chromaticity tolerance LED**  
**glare control**  
**luminance (L65)**  
**unified glare rating (4H 8H)**  
**system of protection**  
**class of protection**  
**technology**  
**operation**  
**housing**  
**cover**  
**arm**  
**balance of articulation joints**  
**weight (net)**  
**mains lead**  
**fastening**

LED  
electronic plug-in ballast  
100-240 V, 50/60 Hz  
env. 16 W  
approx. 1.250 lm  
approx. 78 lm/W  
cold white  
approx. 5.000 K  
CRI > 80  
direct  
approx. 100 %  
85  
< 5 SDCM  
structured screen  
<= 16000 cd/m<sup>2</sup>  
<= 25  
IP 20  
II with plug-in power supply, III without plug-in power supply  
Touch DIM  
multi-function switch  
untreated; dusty grey  
structured; plastic  
tubular aluminium section; anodized; aluminium  
coloured anodised  
spring  
env. 1,9 kg  
ca. 3,20 m; mains plug; CEE 7/XVI; BS 1363 A; NEMA 1-15P  
tap16; table clamp (accessory); wall bracket (accessory); screw-down flange